


National Trends in Implementing Wraparound: Results from the State Wraparound Survey, 2007

April Sather, MPH
Eric J. Bruns, Ph.D.
 University of Washington School of Medicine
Leyla Faw Stambaugh, Ph.D.
 Research Triangle International




Introduction to Wraparound

- A team-based, individualized, family-driven planning and care coordination process
- Requires significant system-level effort to implement with fidelity
- Evolved over past 30 years as a means of supporting families to care for youths with serious and complex needs in their home and community
- Research base slow to develop but growing

February 25, 2008



Published controlled studies of wraparound (N=8)

| Study Characteristic | n | % |
|-----------------------------|---|------|
| Design | | |
| Randomized controlled trial | 2 | 25.0 |
| Non randomized comparison | 5 | 62.5 |
| Multiple baseline | 1 | 12.5 |
| Year of publication | | |
| 1990s | 3 | 37.5 |
| 2000s | 5 | 62.5 |
| Publication type | | |
| Journal article | 6 | 75.0 |
| Book chapter | 2 | 25.0 |
| Population | | |
| Child welfare | 2 | 25.0 |
| Juvenile justice | 2 | 25.0 |
| Mental health | 4 | 50.0 |

February 25, 2008 (Source: Suter & Bruns, in press) 


The State Wraparound Survey, 1998 (Faw, 1999)

- Study conducted by Duke University and Georgetown Univ. TA Center
- One of the most frequently cited studies on the wraparound process
- 13 Item survey mailed to Children's Mental Health Directors in all 50 states, 4 U.S. territories, and D.C.

February 25, 2008



Findings from 1998 Study

- Nearly 90% of responding states (N=49) said that wraparound was available in the state
- Based on 24 states that provided estimates, as many as 200,000 youth may participate in wrap annually.
- Only 40% of states had any defined standards for wraparound implementation
- Less than 50% dedicated resources for training and QA
- Few states measured fidelity
- Results pointed to "a need for a definition as well as an established set of standards"

February 25, 2008


Goals for the 2006-2007 study

- Update and refine the estimate of the number of wraparound initiatives and participating youth.
- Better understand how wraparound implementation is being supported across the country
- Collect qualitative information about implementation successes, barriers, and lessons learned.

February 25, 2008


State Wraparound Survey, 2007

- 17 Item survey (based on the '97 survey) mailed to Children's Mental Health Directors in all 50 states, 4 U.S. territories, and D.C
- Respondents could complete the survey on-line, via hard copy, or via email.
- For this study, wraparound was defined using more precise language, using descriptions based on the model specification work of the National Wraparound Initiative (Walker & Bruns, 2006).

February 25, 2008



Definition → 2007

Wraparound is a team-based process to develop and implement individualized service and support plans for children with serious emotional and behavioral problems and their families. Wraparound implementation is typically facilitated by a trained wraparound facilitator or care coordinator, who works with a team of individuals relevant to the youth and family. The wraparound process also ideally includes the following characteristics:

1. Efforts are based in the community;
2. Services and supports are individualized to meet specific needs of the children and families.
3. The process is culturally competent and strengths-based;
4. Teams have access to flexible funding;
5. Family and youth perspectives are sought and prioritized;
6. Team members include people drawn from family members' natural support network;
7. The wraparound plan includes strategies that draw on sources of natural support;
8. The team monitors progress on measurable indicators of success and changes the plan as necessary.

February 25, 2008



Response Rates

- Forty-seven states, one territory, and the District of Columbia returned the survey
 - Return rate = 89% (49 out of 55 possible states and territories)
 - Same overall return rate as for the 1998 survey

February 25, 2008



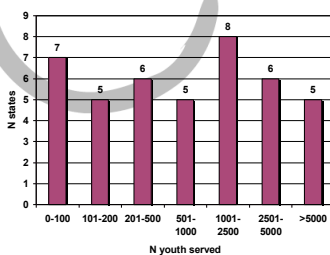
Number of Programs & Youth Served

- 87.8% (n = 43) reported having some sort of wraparound program
 - Same as for 1998 survey
- Of the 43 states reporting a wraparound initiative, 42 gave estimates of the number of children served statewide
 - An estimated 98,293 children estimated to be served by wraparound, in a reported 819 unique programs across the United States

February 25, 2008



N of Youth Served by State

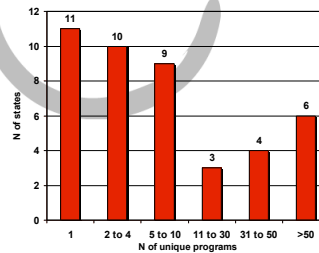


- Mean = 2337
- SD = 3678
- Median = 853
- Range = 66 – 18000
 - Over 5000 youth served: NC, AZ, KY, ME, FL

February 25, 2008



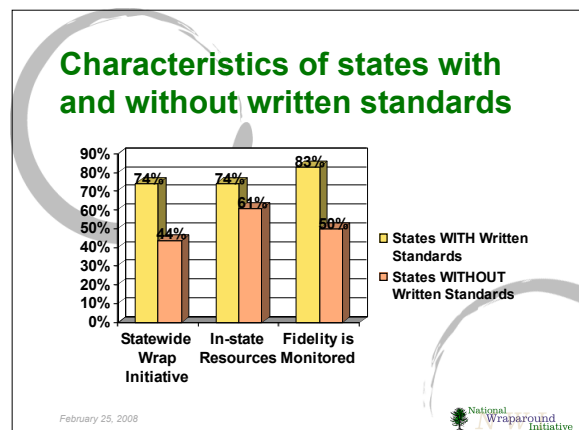
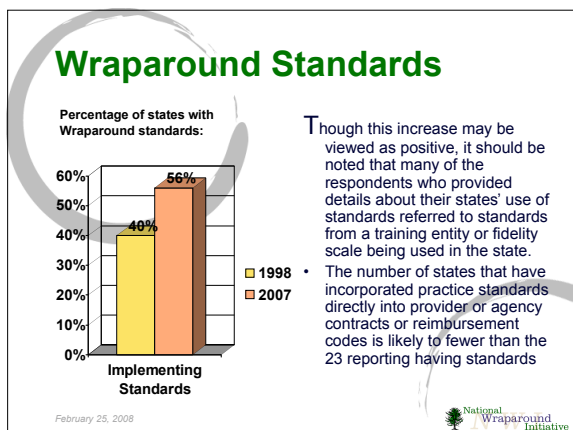
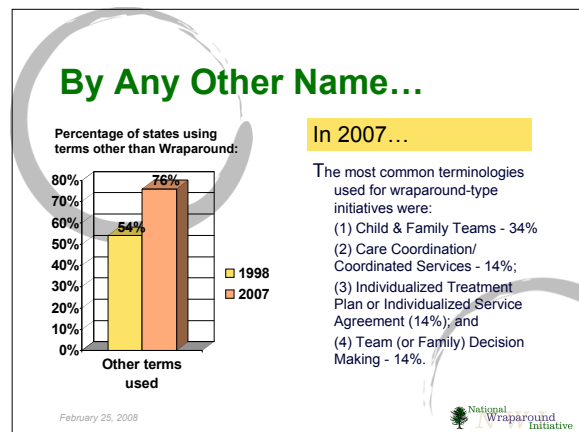
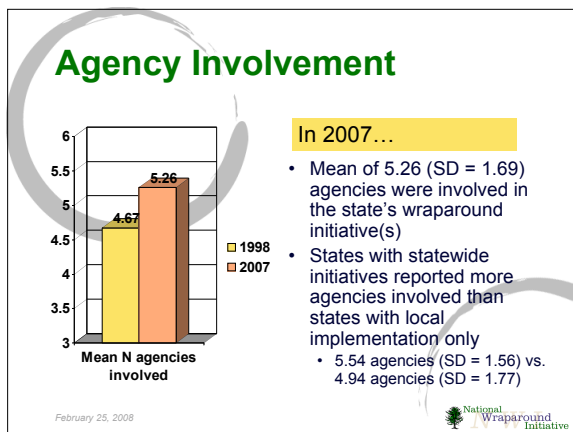
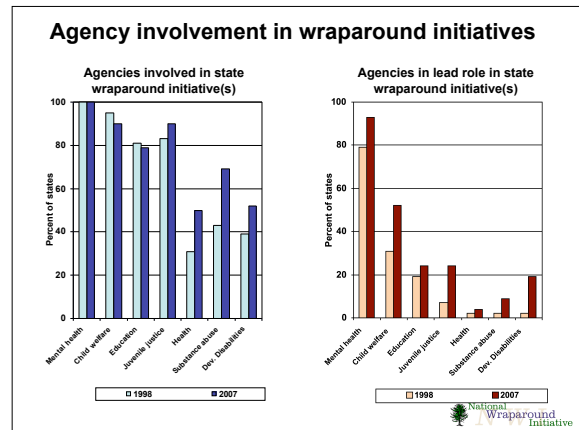
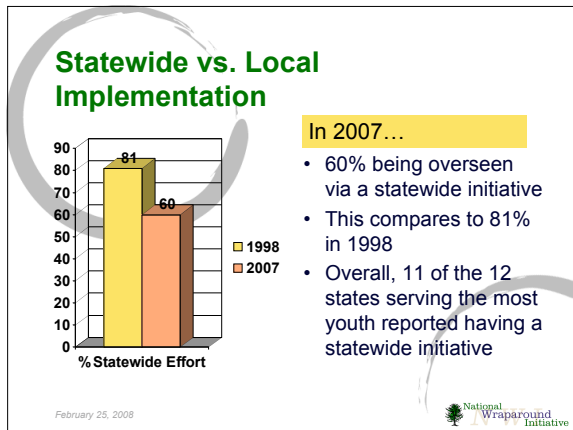
N of unique programs per state



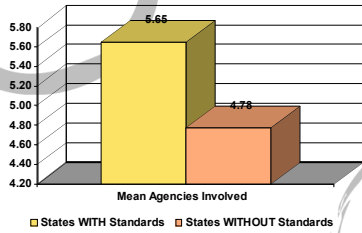
- Mean = 19.1
- SD = 30.5
- Median = 4.5
- Range = 1-134
 - Over 50 unique programs: GA, OH, MI, IL, IN, AZ

February 25, 2008





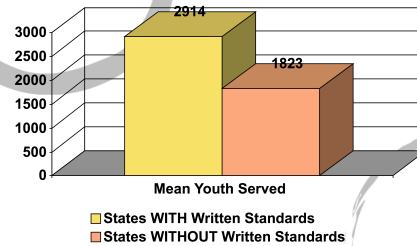
Characteristics of states with and without written standards



February 25, 2008



Characteristics of states with and without written standards



February 25, 2008



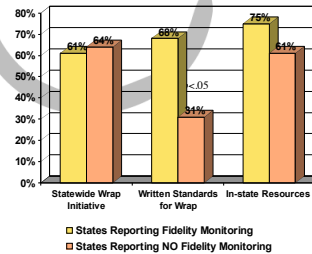
Implementation Resources

- In 2007, 71% of states with wraparound reported in-state resources for wraparound training and professional development.
 - Availability of in-state resources did not differ for states with statewide versus local initiatives.
- Though fewer than 3/4 of states reported having in-state resources for training, 97% of states reported having some sort of in-service training in the last 5 years.
 - This is compared to 86% in 1998.

February 25, 2008



Fidelity Measurement



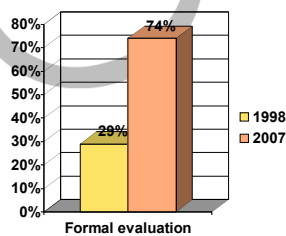
Fidelity measurement was reported by 67% (28 of 42) states that responded

February 25, 2008



Conducting formal evaluation

Percentage of states reporting formal evaluation:

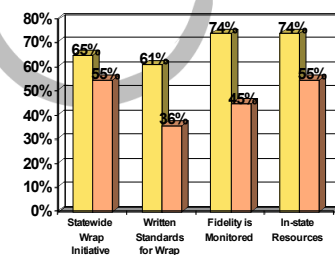


- In 2007, 31 of 42 states (74%) reported some type of formal evaluation was conducted on one or more of its wraparound initiatives
- This compares to only 9 of 31 (29%) in 1998

February 25, 2008



Characteristics of states conducting evaluation



States Reporting Evaluation
States Reporting NO Evaluation

February 25, 2008



Lessons Learned by States

- Thirty-six of the 43 states with wraparound responded to this open-ended item, providing a total of 94 unique statements.
- Over 2/3 of these statements were related to three issues:
 - 1) Maintaining fidelity (n=28)
 - 2) Ensuring stakeholder buy-in and engagement (n=18)
 - 3) Maintaining active family and youth participation and engagement (n=17)

February 25, 2008



Summary of results

- Same number and percent of states implementing wrap in 2007 as 1998
- Fewer youth served per state and overall: 100,000 vs. 200,000?
 - Likely more accurate and due to more stringent definition of wraparound
- Number of statewide initiatives also has declined

February 25, 2008



Positive trends?

- More states reporting standards for implementation
- Greater number of agencies involved in wraparound implementation
- Greater diversity of child-serving systems taking a lead role
 - Child welfare, juvenile justice, and education

February 25, 2008



Positive trends?

- Increasing availability of in-state resources for training and professional development
- More consistent measurement of fidelity
- More formal evaluation of wraparound

February 25, 2008



Implications

- Wraparound is reported to be widely implemented – twice as prevalent as other intensive community treatment models combined
 - MST: 19,000 annually*
 - FFT: 30,000 annually*
 - MTFC: 1,000 annually*

*Source = Evidence Based Associates (2008)

February 25, 2008

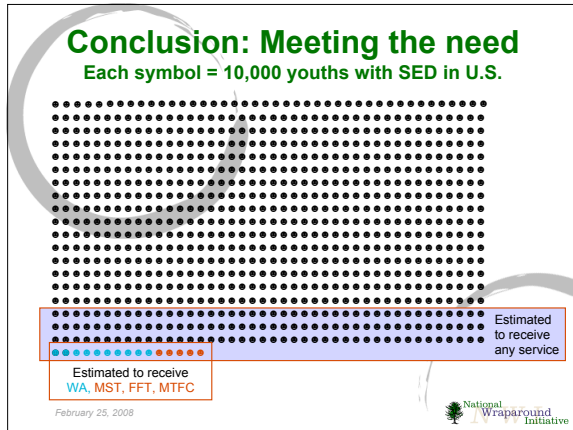


Implications

- Fortunately, it appears that greater attention is being paid to implementation and quality
- States should consider statewide coordination and use of standards
 - **Standards** are associated with more consistent evaluation, fidelity monitoring and availability of in-state professional development resources
 - **Statewide initiatives** associated with greater deployment of standards and involvement by more agencies

February 25, 2008





For more information...

- To learn more about the State Wraparound Survey or to download a copy of this presentation, please visit the Wraparound Evaluation and Research Team at <http://depts.washington.edu/wrapeval>, or,
- Contact **April Sather** at wrapeval@u.washington.edu / 206-685-2310
- To learn more about the **National Wraparound Initiative**, check out our website at www.rtc.pdx.edu/nwi.

Acknowledgments
The authors would like to thank all the participating states and the respondents who took the time to complete the State Wraparound Survey. This research was completed as part of the work of the National Wraparound Initiative, which is supported in part through a Task Order from the Child, Adolescent and Family Branch of the SAMHSA Center for Mental Health Services.

February 25, 2008